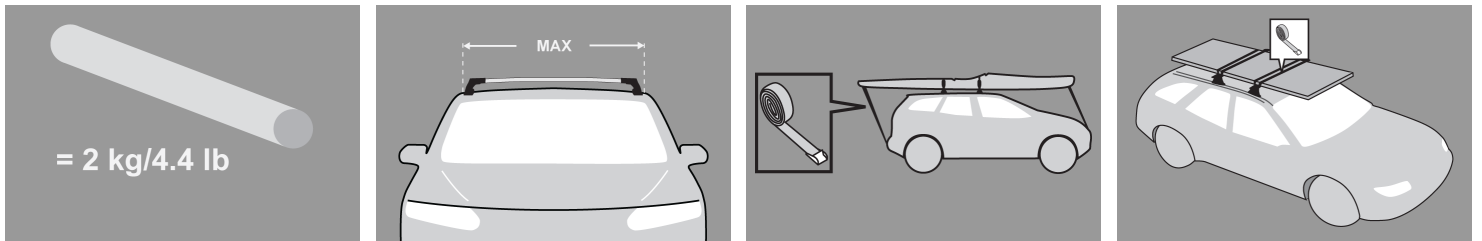


GB Fitting Instruction for Accessory



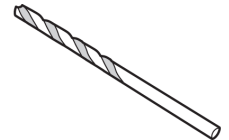
x 2



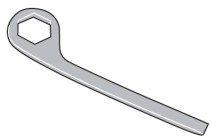
x 2



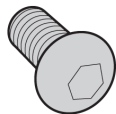
x 2



x 1



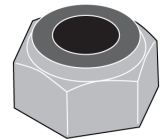
x 1



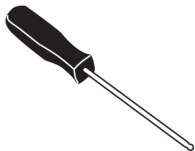
x 12



x 12



x 12



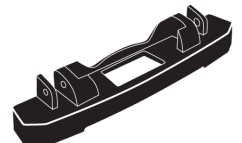
x 1



x 4



x 4



x 4



x 1

3 mm

First Time Installation



- Remove parts from inside the package and check. Contact your dealer if any parts are missing or damaged.



- This kit fits type A, B, C and D.



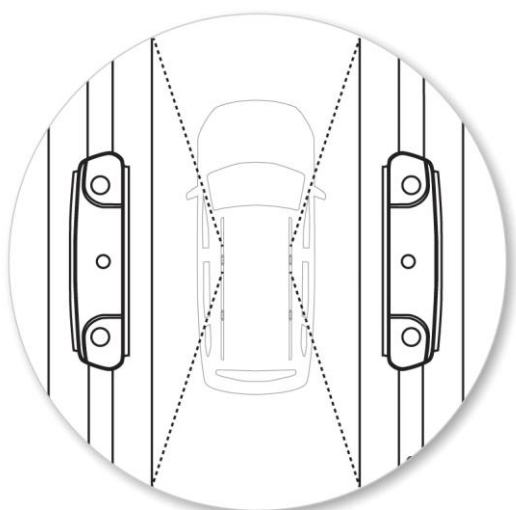
- Front end plug.



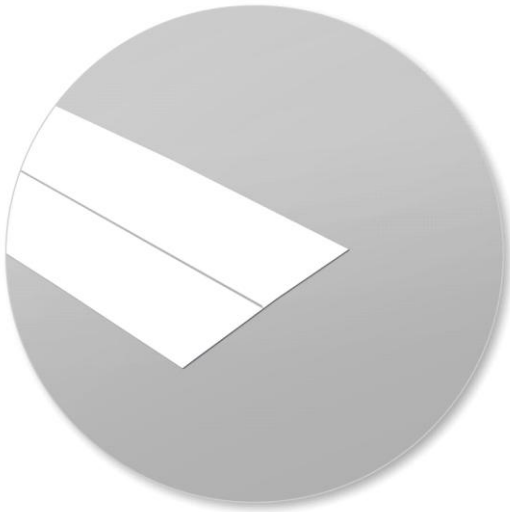
- Rear end plug.



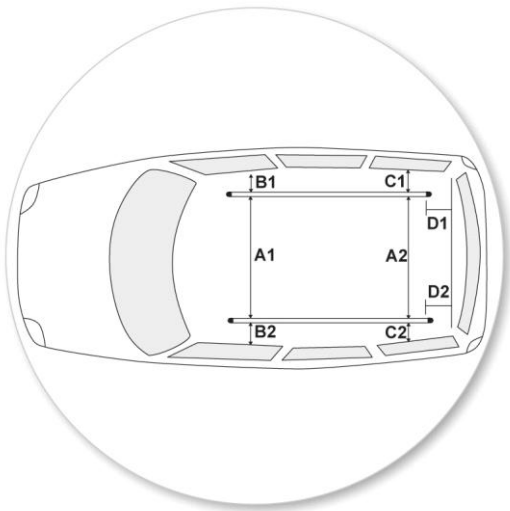
- Assemble front and rear plugs to tracks.
Note: Rear plug shown in picture.



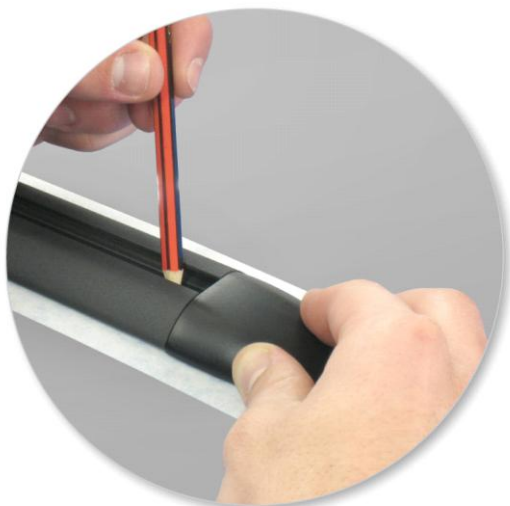
- NOTE: There is a left hand track and right hand track. The end plugs should be fitted accordingly.



- Carefully select position on vehicle roof making sure that your crossbar lengths will match selected positions for the tracks.
- Apply long lengths of masking tape to vehicle roof in both positions.
- Repeat for all four positions.
- Make sure there is no interference between what you intend to carry with aerials, sunroof or tailgate.



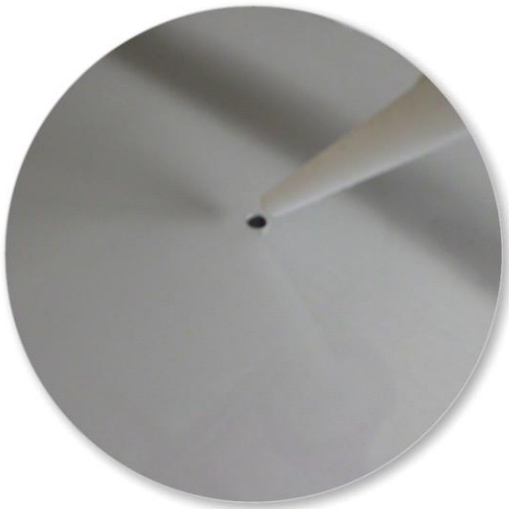
- Tracks can be fitted either parallel or tapered to match vehicle roof shape.
- Parallel Tracks:
 - A1 & A2 are equal
 - B1 & B2 are equal
 - C1 & C2 are equal
 - D1 & D2 are equal
- Tapered Tracks:
 - A1 & A2 are different
 - B1 & B2 are equal
 - C1 & C2 are equal
 - D1 & D2 are equal



- With help from another person, carefully lay tracks over the masking tape and mark hole positions with a pencil or pen.
- Take care not to move the tracks until the holes are marked out.



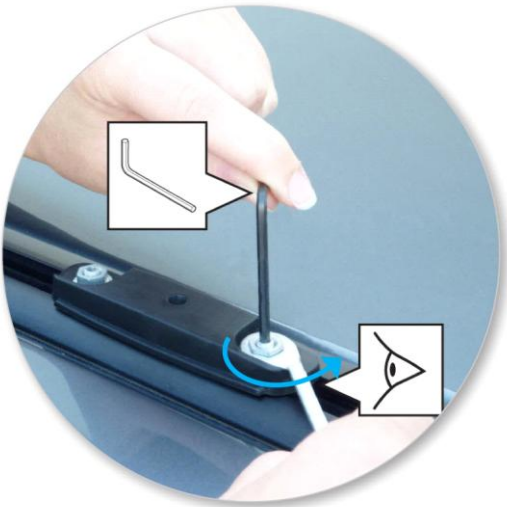
- Use drill bit supplied, to drill holes in marked positions.



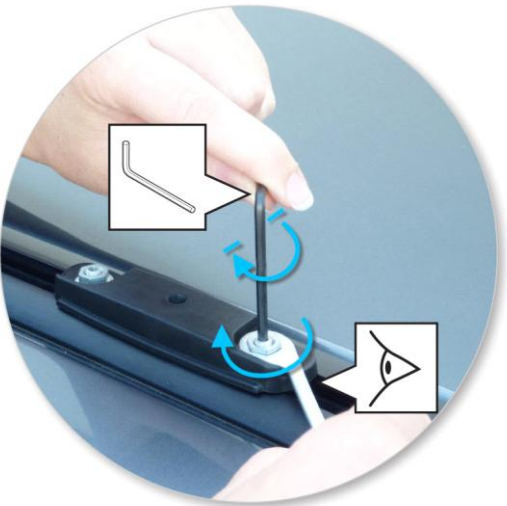
- Remove masking tape and apply non-acetic silicon sealant around drilled holes.
- Sit tracks on roof and line up tracks with drilled holes.
- Insert all cap screws through the drilled holes.



- With assistance, fit washer and nut loosely onto each of the cap screws from inside the canopy.
- Use a spanner to tighten the nuts onto the cap screws to 3Nm (2.2 ft lb) using the 3mm (1/8") Allen Key provided.



- If the position of the roof racks need to be adjusted along the tracks, use the 3mm (1/8") Allen Key to hold the T-bolt stationary, and using the 10mm (3/8") spanner supplied loosen both of the nuts slightly on all the mounting points to be adjusted.
- Adjust the position of the mounting points along the tracks as required.



- Use the 3mm (1/8") Hex Key to hold the T-bolt in a stationary position and ensure the T-bolt has correct engagement.
- Using the 10mm (3/8") spanner supplied, tighten the nut to 5Nm (3.7 ft lb).



- Use keys to remove covers.



- Remove plastic clamp block by gripping bar leg with fingers and push firmly with thumbs until clamp block drops out behind leg.



- Remove both pins from each leg. Use tapered end of spanner located inside left hand cover to assist.



- Detach foot from leg. Store loose parts in a safe place.
- Repeat for all legs.



- Assemble foot from kit into leg.



- Insert pins through foot into leg.



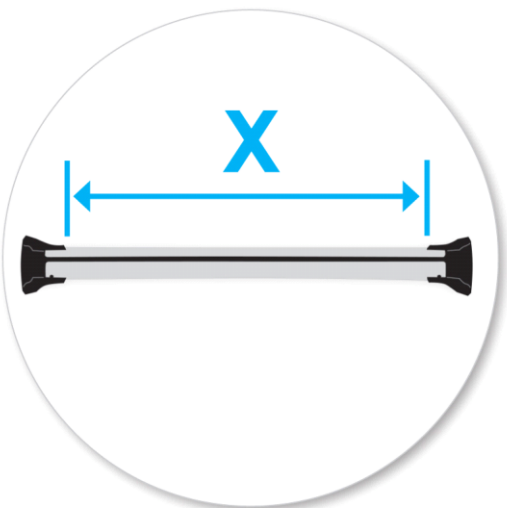
- Select plastic internal block (from fitting kit) and insert into foot.
- Repeat for all legs.



- Use hex screwdriver to reverse adjusting screw 10 turns.



- Press adjusting screw and pull crossbar legs out. Refer to the crossbar instructions for crossbar adjustment.
- Ensure each end of the crossbar is adjusted equally.



- Set bars to length so that the mounting holes will line up (refer to the crossbar instructions for crossbar adjustment).



- Place crossbars over mounting assembly on tracks.



- Tighten the red plastic knob.



- Ensure the red plastic knob is in the position shown when fully tightened.
- Repeat for all four positions.



- Check crossbar is securely attached to the vehicle.
- Use keys to fit and lock covers

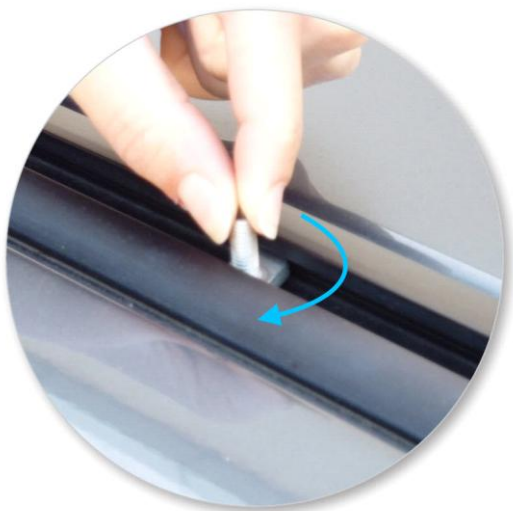
CAUTION:

**Recheck all fasteners immediately after a load is applied to the crossbars.
Regularly check screws are tight.**

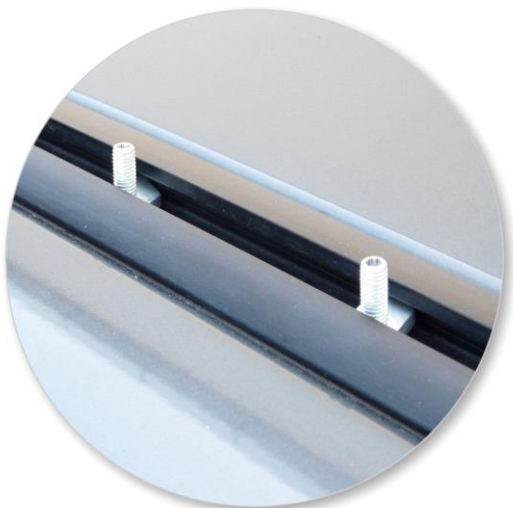
To Fit the Mounting Block in the Track if Required



- Place T-bolt into track by either inserting it from the top or sliding in from the end.



- Rotate bolt clockwise so it engages in place in the centre of track.



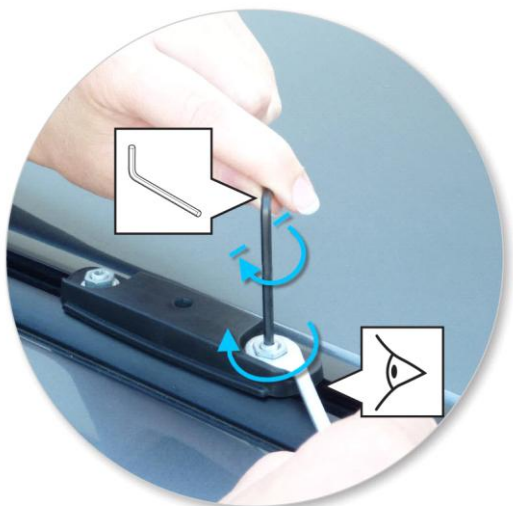
- Use 4 T-bolts per track
- Repeat for both tracks.



- Place track pad over T-bolt



- Thread the nut over the T-bolt by hand.
- Repeat for all four positions.



- Use the 3mm (1/8") Hex Key to hold the T-bolt in a stationary position and ensure the T-bolt has correct engagement.
- Using the 10mm (3/8") spanner supplied, tighten the nut to 5Nm (3.7 ft lb).
- Tighten with provided 10mm (3/8") spanner.

Maintenance

- Clean the car roof and surfaces of the product that will be in contact with the car roof.
- Follow the fitting instructions for fitting the product to your vehicle. Make sure all steps are carried out in order.
- Set crossbars a minimum distance of 700mm (27 1/2") apart where no other distance is specified in the fitting instructions. This is especially important when carrying long loads.
- Check unit is securely attached whenever you refit it to the vehicle. If the unit feels loose, refer to the fitting instructions and readjust.
- Some glass/panoramic roofs and radio antennae may not be able to be used when the product is fitted.
- Do not modify this product.
- Refer to the maximum permitted load capacity specified in the fitting instructions. Do not exceed the vehicle manufacturers roof load rating if it is lower than the maximum load capacity specified in the fitting instructions.
- Loads should not overhang the sides of the product and be evenly distributed with the lowest possible centre of gravity.
- Long loads should be secured with non-elastic straps to the front and rear of the vehicle.
- Objects with pointed ends (e.g. ski poles) should be carried with the pointed ends to the rear of the vehicle.
- Remove all loose or removable objects from the load prior to loading.
- Make sure all loads are securely fastened with non-elastic straps. Check regularly during longer journeys.

- A loaded roof rack system can alter the performance of your vehicle. Be especially aware of the effects of side winds, changing of direction, and braking performance. Avoid rapid acceleration and deceleration. Drive carefully.
- Note that the total height of the vehicle increases when upright loads are carried.
- Products should be locked during transport if they have locks fitted.
- Check and replace worn out or defective parts.
- Keep the product clean and maintained.
- Never drive into a car wash with the roof rack system fitted.
- Lubricate locks and adjusting screws at regular intervals.
- Remove the products from the vehicle when not in use. Make sure all loose parts are stored safely.

-
- Hubco Automotive Ltd
P. O. Box 11017
Christchurch
NEW ZEALAND

www.whispbar.com
www.whispbar.com.au
www.whispbar.co.nz
www.whispbar.co.uk
www.whispbar.co.za
www.whispbar.eu
www.whispbar.ca
